

# CREATE

## INSPIRATIONS

**SPRING & SUMMER 2016**





## INSPIRATIONS

**SPRING & SUMMER 2016**

Our latest new product introductions open the door to a whole new set of possibilities for the SS 2016 season and beyond! From an elegantly masculine new shape, to an exotically feminine new colour, from new sew-ons to innovative bandings, from classical bridal to the hottest new metal plating on the market, the Bohemian crystal and glass-making masters bring you a brilliant assortment of new sparkling INSPIRATIONS from which to CREATE.

Dive in and let your imagination run on these pages full of innovative ideas and beautiful crystal. Your products never looked so good with these new luxurious, sparkling PRECIOSA Crystal Components – and their reasonable price will be your best-kept secret!

**AVAILABLE FROM SEPTEMBER 2015**







*Nacre  
Cabochons*

# CONTENTS

<b>PADPARADSCHA</b> .....	<b>6</b>
<b>MC RIVOLI MAXIMA</b> .....	<b>8</b>
<b>MC BUTTERFLY 601</b> .....	<b>10</b>
<b>MC CHESSBOARD SQUARE</b> .....	<b>12</b>
<b>MC NAVETTE 301 2H + MC PEARSHAPE 301 2H</b> .....	<b>14</b>
<b>METAL BANDINGS WITH NACRE CABOCHONS</b> .....	<b>16</b>
<b>NACRE CABOCHONS IN SETTINGS</b> .....	<b>18</b>
<b>MC SQUARE 132 IN SETTINGS</b> .....	<b>20</b>
<b>STONES IN SETTINGS, JEWELLERY CUPS</b> .....	<b>22</b>
<b>ROSE GOLD PLATING</b> .....	<b>24</b>



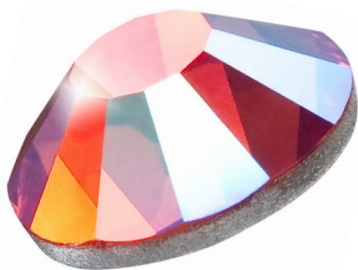


NEW COLOUR

# *Padparadscha*

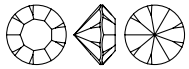
DIVINELY EXOTIC

Breathe in the delicate aroma of this exotic pinkish orange delight. This super-popular and trendy new colour creates alluring masterpieces when used to bedazzle any fashion-forward design or accessory. In fact, we love this shade so much that we are introducing it in our most popular product lines, with and without the new AB effect!



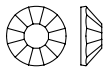
JEWELLERY DESIGN BY  
MARTINA STROUHALOVÁ

AVAILABLE IN MC CHATON MAXIMA AND MC CHATON ROSE VIVA 12®



MC Chaton MAXIMA | ART. 431 11 615

COLOUR		SS	4	4.5	5	5.5	6	6.5	7	7.5	8	8.5	9	9.5	10	11	11.5	12	16	19	24	29	34	39
Padparadscha   90350 (DF)		●	●	●	●	●	●	●	●	●	●	●	●	●	●	●	●	●	●	●	●	●	●	●
Padparadscha AB   90350 (TC) (DF)		○	○	○	○	○	○	○	○	○	○	○	○	○	○	○	○	○	○	○	○	○	○	○



MC Chaton Rose VIVA 12® | ART. 438 11 612

COLOUR		SS	6	8	10	12	16	20	30	34
Padparadscha   90350 (SF)		●	●	●	●	●	●	●	●	●
Padparadscha   90350 (HF)		●	●	●	●	●	●	●	●	●
Padparadscha AB   90350 (TC) (SF)		●	●	●	●	●	●	●	●	●
Padparadscha AB   90350 (TC) (HF)		●	●	●	●	●	●	●	●	●

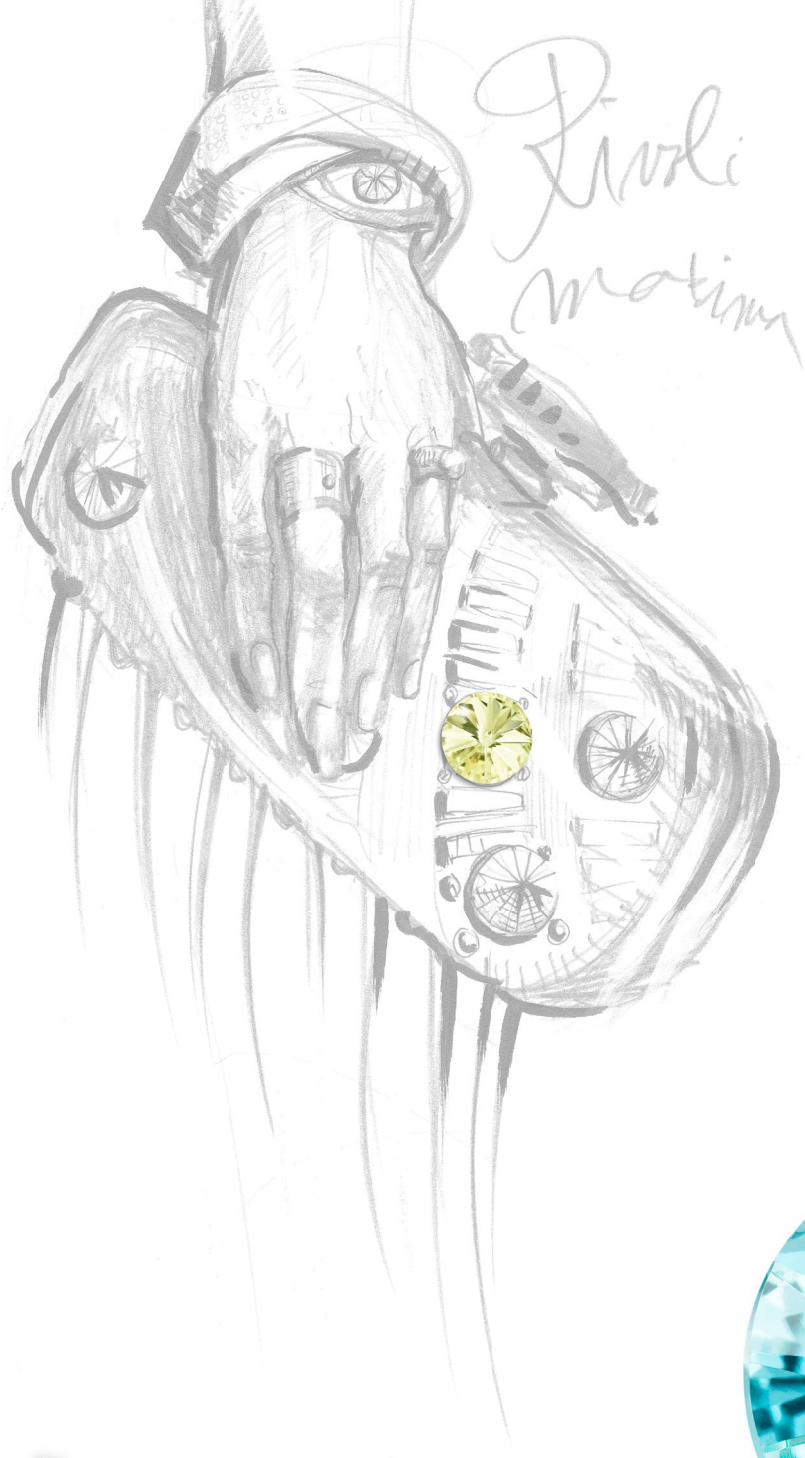


LEGEND:

- . Standard assortment
- . Minimum Order Quantity - for more details contact the Preciosa Sales Office







NEW QUALITY

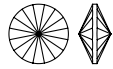


## *MC Rivoli Maxima*

PARTY IN STYLE!

Revolutionize your creations with the shimmering elegance of the 16-facet MC Rivoli! Any party dress, accessory – or striking stiletto will shine with this latest member of the MAXIMA Round Stones collection. With ten sizes to choose from, this new gem comes in crystal as well as all our most popular colours and finishes. What's more, you can order it with or without cups – ideal for all your design (and party) needs!

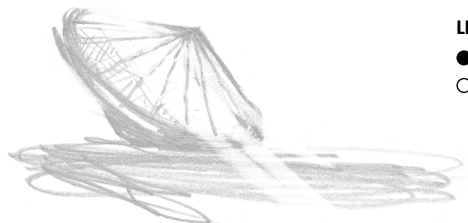




MC Rivoli MAXIMA | ART. 436 11 177

COLOUR / COATING	SS	11	24	29	34	39	47	mm	12	14	16	18
Crystal   00030 (DF)	●	●	●	●	●	●	●	●	●	●	●	●
Crystal AB   00030 (TC) (DF)	●	●	●	●	●	●	●	●	●	●	●	●
Crystal AgF   00030 (TC) (DF)	○	○	○	○	○	○	○	○	○	○	○	○
Crystal Apri   00030 (BC) (A)	○	●	●	○	●	●	●	●	○	○	○	○
Crystal Aur   00030 (TC) (DF)	○	○	○	○	○	○	○	○	○	○	○	○
Crystal BBI   00030 (BC) (A)	○	●	●	○	●	●	●	●	○	○	○	○
Crystal BdF   00030 (TC) (DF)	○	○	○	○	○	○	○	○	○	○	○	○
Crystal CaG   00030 (TC) (DF)	○	○	○	○	○	○	○	○	○	○	○	○
Crystal Cel   00030 (TC) (DF)	○	○	○	○	○	○	○	○	○	○	○	○
Crystal Hel   00030 (BC) (A)	○	●	●	○	●	●	●	●	○	○	○	○
Crystal Hon   00030 (TC) (DF)	○	●	●	○	●	●	●	●	○	○	○	○
Crystal Lab   00030 (TC) (DF)	○	○	○	○	○	○	○	○	○	○	○	○
Crystal MtC   00030 (TC) (DF)	○	○	○	○	○	○	○	○	○	○	○	○
Crystal StG   00030 (TC) (DF)	○	○	○	○	○	○	○	○	○	○	○	○
Crystal Vel   00030 (TC) (DF)	○	○	○	○	○	○	○	○	○	○	○	○
Crystal VL   00030 (BC) (A)	○	●	●	○	●	●	●	●	○	○	○	○
Crystal VM   00030 (BC) (A)	○	●	●	○	●	●	●	●	○	○	○	○
Jet   23980 (U)	○	●	●	○	●	●	●	●	○	○	○	○
Jet Hem   23980 (TC) (U)	○	●	●	○	●	●	●	●	○	○	○	○

COLOUR	SS	24	29	34	39	47	mm	12	14
Amethyst   20050 (DF)	●	●	●	●	●	●	●	●	●
Aqua Bohemica   60010 (DF)	●	●	●	●	●	●	●	●	●
Emerald   50730 (DF)	●	●	●	●	●	●	●	●	●
Fuchsia   70350 (DF)	●	●	○	○	○	○	○	○	○
Jonquil   80100 (DF)	●	●	●	●	●	●	●	●	●
Light Peach   90300 (DF)	●	●	●	●	●	●	●	●	●
Light Rose   70020 (DF)	●	●	○	○	○	○	○	○	○
Light Colorado Topaz   10330 (DF)	●	●	●	●	●	●	●	●	●
Light Sapphire   30020 (DF)	●	●	●	●	●	●	●	●	●
Montana   30340 (DF)	●	●	●	●	●	●	●	●	●
Rose   70010 (DF)	●	●	○	○	○	○	○	○	○
Sapphire   30050 (DF)	●	●	●	●	●	●	●	●	●
Violet   20310 (DF)	●	●	●	●	●	●	●	●	●



LEGEND:

- . . Standard assortment
- . . Minimum Order Quantity - for more details contact the Preciosa Sales Office







NEW MAXIMA SHAPE

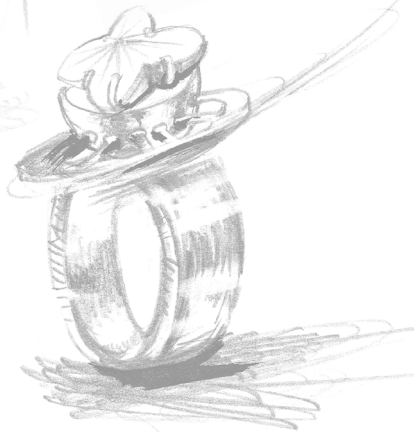
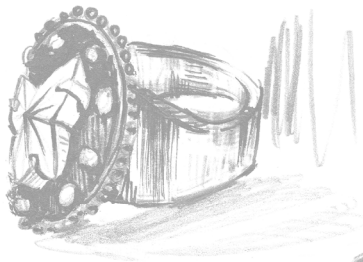


# *MC Butterfly 601*

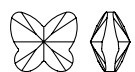
ETHEREAL TRANSFORMATION

As nature morphs the land-bound caterpillar into fluttering splendour, you too can transform your collections into romantic flights of fancy with the MAXIMA MC Butterfly. Its uniquely faceted cut – available only from Preciosa – will add a sparkingly playful and sunny dimension to your designs, whether you use this new Fancy Stone in jewellery, accessories or any other fashion creations. Available in two sizes, it comes in either Crystal, AB or Honey.

*Ring*



AVAILABLE IN 2 SIZES, 1 COLOUR AND 2 COATINGS





MC Butterfly 601 | ART. 435 09 601

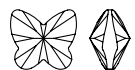
COLOUR / COATING

mm 5

 **Crystal** | 00030 (DF)

 **Crystal AB** | 00030 (TC) (DF)


 **Crystal Hon** | 00030 (TC) (DF)





MC Butterfly 601 | ART. 435 09 601

COLOUR / COATING

mm 10

 **Crystal** | 00030 (DF)

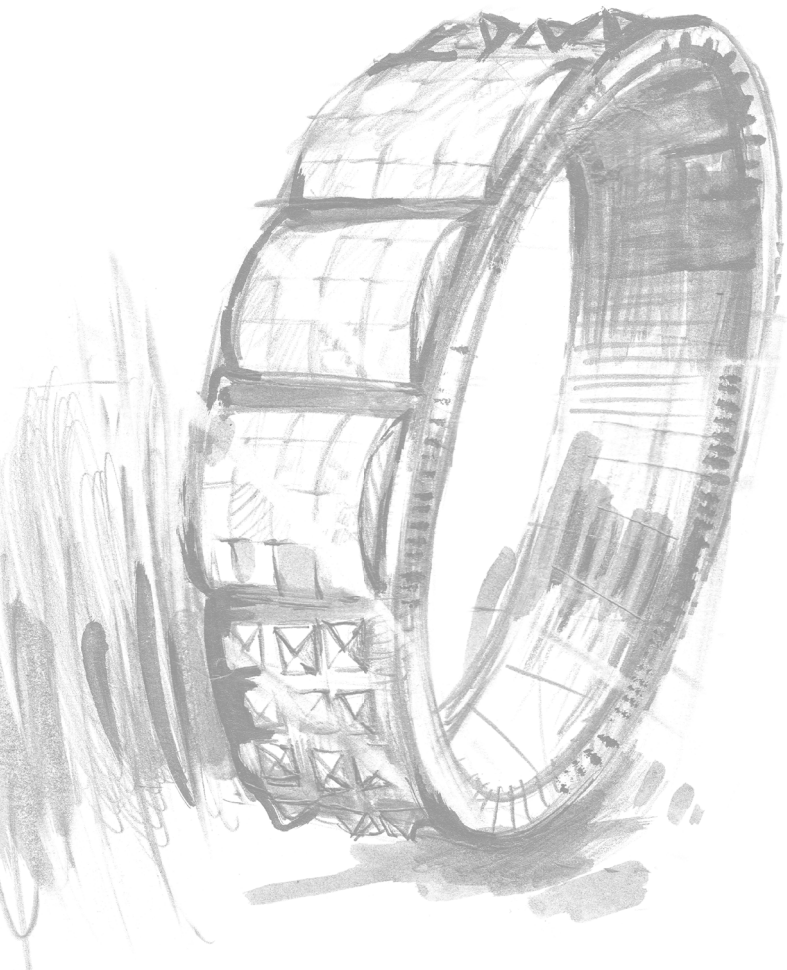
 **Crystal AB** | 00030 (TC) (DF)

 **Crystal Hon** | 00030 (TC) (DF)



JEWELLERY DESIGN BY  
MARTINA STROUHALOVÁ





NEW MAXIMA SHAPE

# *MC Chessboard Square*

MANLY - YET DAZZLING

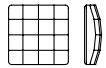
Ideal for adding a touch of sophistication to any men's accessory, moving rook to queen bishop 4 never looked so good! The new MC Chessboard Square nevertheless retains its stylish feminine beauty, and can be used glued or set in a metal cup in fashion creations for either sex. The new stone comes in three Dura-Foiled sizes and in Crystal, Black, Crystal AB and Crystal Honey.





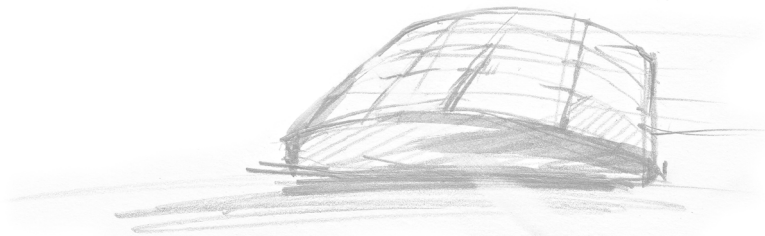
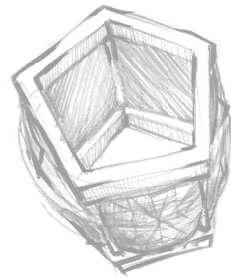


AVAILABLE IN 3 SIZES, 2 COLOURS AND 2 COATINGS



MC Chessboard Square | ART. 438 23 301

COLOUR / COATING	mm	8x8	10x10	12x12
Crystal   00030 (DF)		●	●	●
Crystal AB   00030 (TC) (DF)		●	●	●
Crystal Hon   00030 (TC) (DF)		●	●	●
Jet   23980 (DF)		●	●	●



*Chess Board Square*



JEWELLERY DESIGN BY  
MARTIN POUZAR

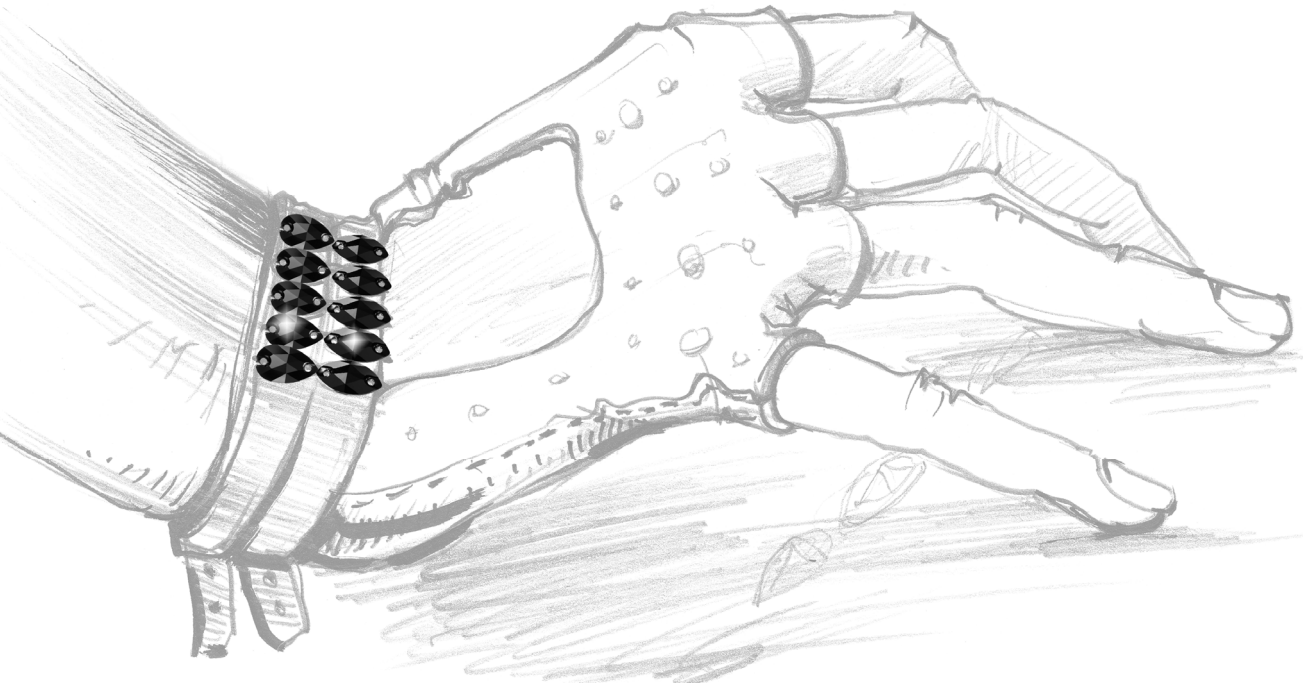


NEW IN JET COLOUR

*MC Navette 30I 2H*  
*MC Pearshape 30I 2H*

JOIN THE JET SET

Joining the ever-elegant and chic Jet Set, the new sew-on MC Navette and Pearshape will add a dash of classic luxury to any fast-paced, high-flying lifestyle. Offered in two sizes, these two-holed flatback beauties are the perfect embellishment for any dance, fashion or accessory!





AVAILABLE IN 2 SIZES



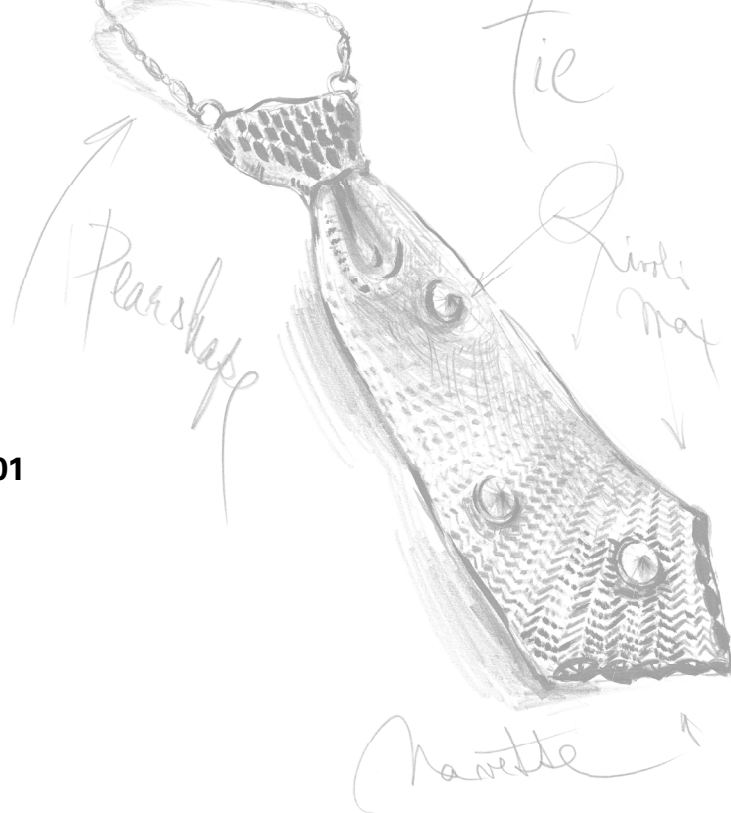
MC Navette 301 2H | ART. 438 64 301

COLOUR

Jet | 23980

(U)

mm  
12x6  
18x9



MC Pearshape 301 2H | ART. 438 67 301

COLOUR

Jet | 23980

(U)

mm  
12x7  
18x10.5



JEWELLERY DESIGN BY  
KATEŘINA KRAUSOVÁ



NEW PRODUCT

## *Metal Bandings with Nacre Cabochons*

ACCENT YOUR "I DO"  
WITH A CLASSIC

Adorning a wedding dress, veil or bridal bouquet has never been easier using the latest addition to our Banding family. With ribbon, two stramine colours and three metal finishes you can help your bride shine with the timeless elegance she deserves on her special day. What's more, with this new banding, which comes in one to twenty-four rows, you can match any accent colour: choose from our wide array of Pearl Effects, Gemcolours, and all MC Chaton Rose VIVA 12® colours and coatings!

*Banding*



## AVAILABLE FROM 1-ROW TO 24-ROW WIDE



### Metal Bandings

Art.	Description	Packing unit (Spool)	Note
		M	
491 16 401	Nacre Cabochons   4.5 mm	10	Each style (apart from Banding on Braid) available from 1-row to 24-rows wide
491 12 001	Nacre Cabochons + MC Chaton Roses VIVA 12®   4.5 mm / ss 20	10	

### Available Styles

Art.	Note
491 16 4xx/xx – On Braid	Each style of Nacre Cabochons (apart from Banding on Braid) available from 1-row to 24-rows wide
491 26 4xx/xx – No Extra Stramine	
491 36 4xx/xx – One Side Stramine	
491 46 4xx/xx – Both Side Stramine	
491 12 0xx/xx – On Braid	Each style of Nacre Cabochons + MC Chaton Roses VIVA 12® (apart from Banding on Braid) available from 1-row to 24-rows wide
491 22 0xx/xx – No Extra Stramine	
491 32 0xx/xx – One Side Stramine	
491 42 0xx/xx – Both Side Stramine	

### Available Settings

Plating	Type
/11	Silver Cup, White stramine / Braid
/12	Silver Cup, Black stramine / Braid
/21	Gold Cup, White stramine / Braid
/22	Gold Cup, Black stramine / Braid
/31	Black Cup, White stramine / Braid
/32	Black Cup, Black stramine / Braid

## AVAILABLE COLOURS

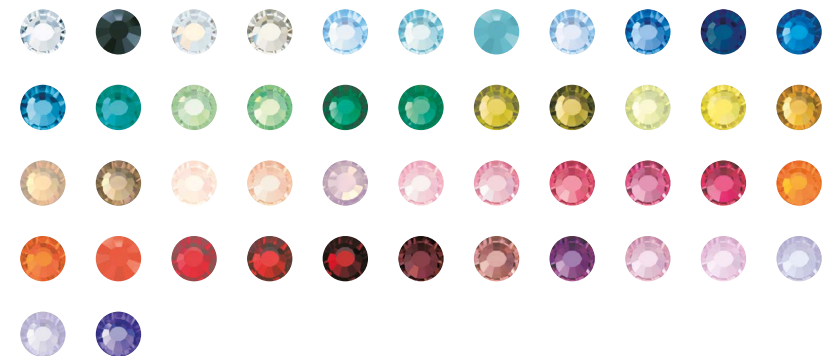
### All Colours of Nacre Cabochons – Pearl Effects



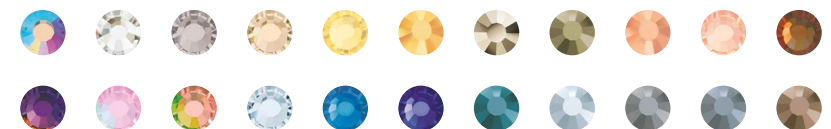
### All Colours of Nacre Cabochons – Gemcolours



### All Colours of MC Chaton Roses VIVA 12®



### All Coatings of MC Chaton Roses VIVA 12®







NEW PRODUCT

# *Nacre Cabochons in Settings*

YOUTHFUL ELEGANCE

Create or reinvent any design with this fresh and youthful new Stones in Settings choice! Hot on trend, they add an element of glamorous playfulness, giving any ensemble the perfect mix of innocence and coquettish flair. Our new Nacre Cabochons in Settings come in all Pearl Effects and Gemcolours, three sizes and two platings.





**AVAILABLE IN 3 SIZES AND 2 PLATINGS**

**Nacre Cabochons, Sew-on**

Art.	Plating	Size of stones	Packing unit
		MM	GROSS
* 7192 9413	/xx	4 mm	10
* 7192 9415	/xx	5 mm	5
* 7192 9474	/xx	7 mm	2

**Available Platings**

Plating	Type
/01	silver
/02	gold

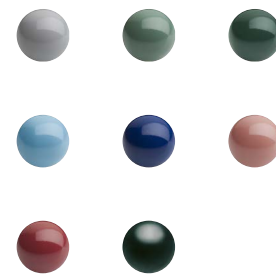


**AVAILABLE IN PEARL EFFECTS AND GEMCOLOURS**

**Pearl Effects**



**Gemcolours**



JEWELLERY DESIGN BY  
MARTINA STROUHALOVÁ

**NOTE:**

\* The item requires MOQ.





NEW PRODUCT

# *MC Square 132 in Settings*

## *Sew-on and Jewellery Cups*



### BEING SQUARE IS IN

Being square has never been so trendy! Stand out and be the talk of the town in this simple yet très hip MC Square. Right on the mark, this latest style of large stones is available in raw, gold, silver, rhodium or our brand new rose gold. It comes in all the standard MC Square colours, making it ideal for all types of jewellery, clothing, or fashion accessory.

*Square*



**AVAILABLE IN 1 SIZE AND 4 PLATINGS AND RAW**

**MC Square 132, Jewellery Cup**

Art.	Plating	Size of stones	Packing unit
		MM	GROSS
* 7193 9010	/xx	10×10	1

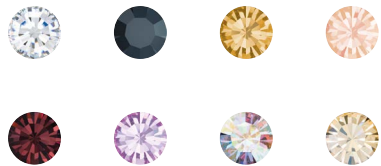
**MC Square 132, Sew-on**

Art.	Plating	Size of stones	Packing unit
		MM	GROSS
* 7193 9410	/xx	10×10	1

**Available Platings**

Plating	Type
/00	raw
/01	silver
/02	gold
/04	rhodium**
/0R	rose gold**

**AVAILABLE IN ALL COLOURS OF MC SQUARE 132**

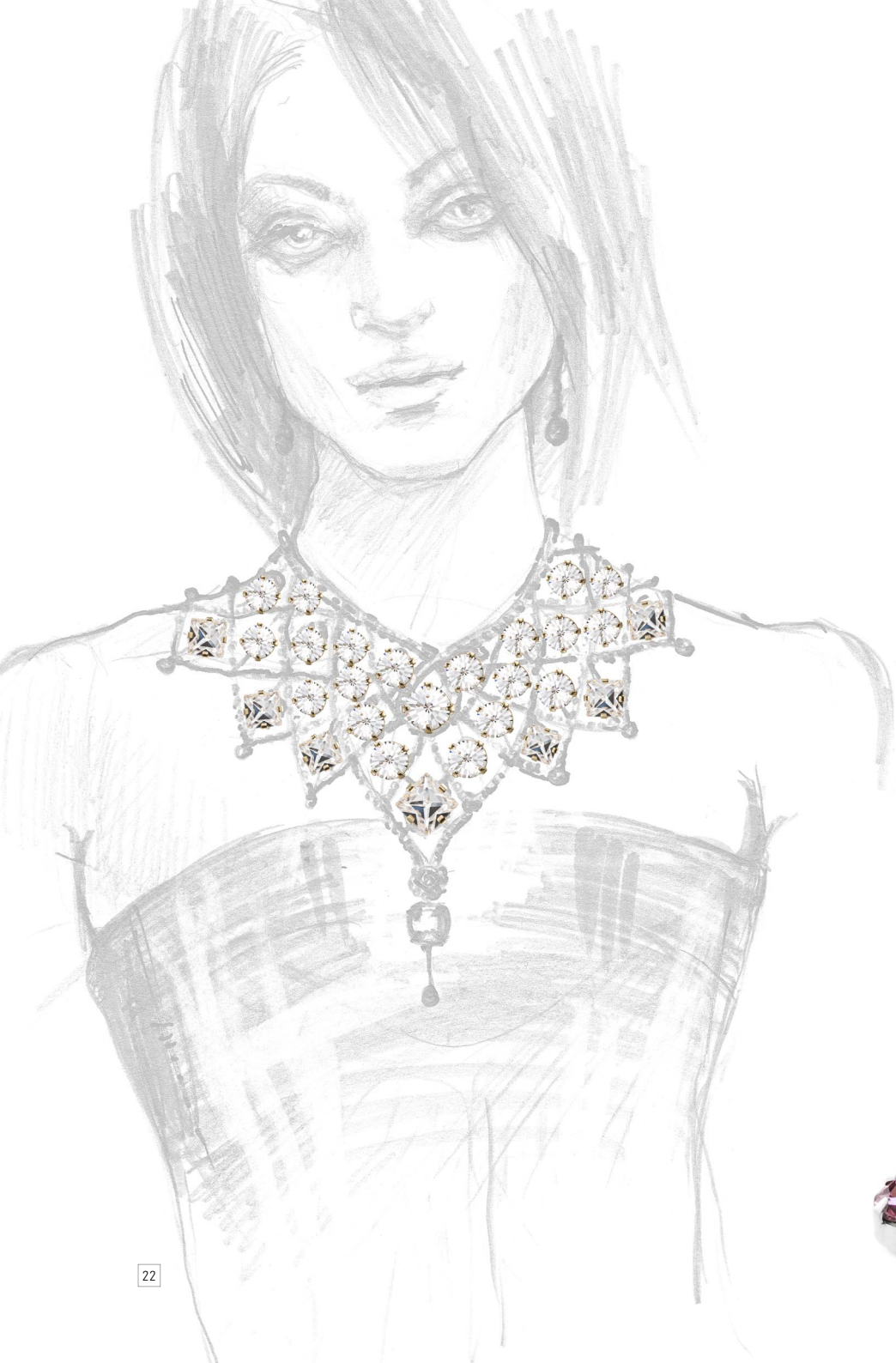


**NOTE:**

Only raw cups are resistant to plating and soldering.

\* Item requires MOQ.

\*\* Plating available only in sew-on cup.



NEW PRODUCTS

## *Stones in Settings* *Jewellery Cups*

### SAY IT WITH SETTINGS

Make a statement with the extravagant MAXIMA MC Chaton, Rivoli, and MC Square – now all available in jewellery cups! Ideal for unique collections or bespoke pieces, these brilliantly sparkling jewels come in the same variety of colours as their standard non-set cousins in gold, silver or raw metal settings. Now you have even more options for these all-time favourites!



### MC Chaton MAXIMA, Jewellery Cup

Art.	Plating	Size of stones	Packing unit
		ss	GROSS
7193 6016	/xx	ss 16	10
7193 6019	/xx	ss 19	10
7193 6020	/xx	ss 20	10
* 7193 6029	/xx	ss 29	2
* 7193 6034	/xx	ss 34	2
* 7193 6039	/xx	ss 39	1

### MC Rivoli MAXIMA, Jewellery Cup

Art.	Plating	Size of stones	Packing unit
		ss	GROSS
7193 7082	/xx	ss 29	2
7193 7084	/xx	ss 34	2
7193 7086	/xx	ss 39	1

### MC Square MAXIMA, Jewellery Cup

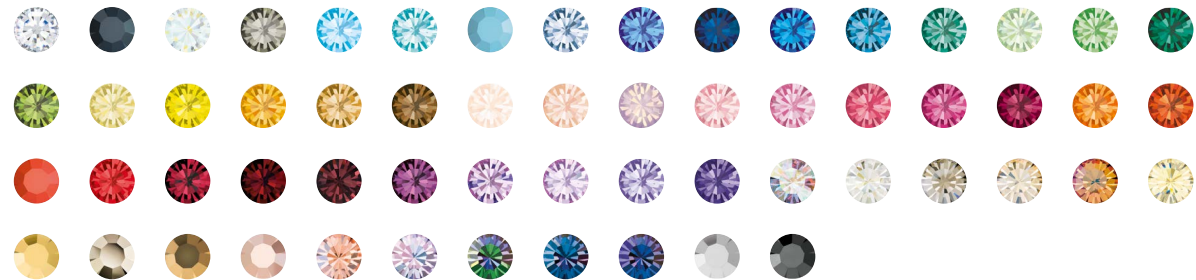
Art.	Plating	Size of stones	Packing unit
		MM	GROSS
7193 9141	/xx	4×4	5
7193 9137	/xx	5×5	2 ½
7193 9142	/xx	6×6	2
7193 9138	/xx	8×8	1

### Available Platings

Plating	Type
/00	raw
/01	silver
/02	gold

### AVAILABLE COLOURS

#### All Colours and Coatings of MC Chaton MAXIMA



#### All Colours and Coatings of MC Rivoli MAXIMA



#### All Colours and Coatings of MC Square MAXIMA



**NOTE:**

Only raw cups are resistant to plating and soldering.

\* Item requires MOQ.



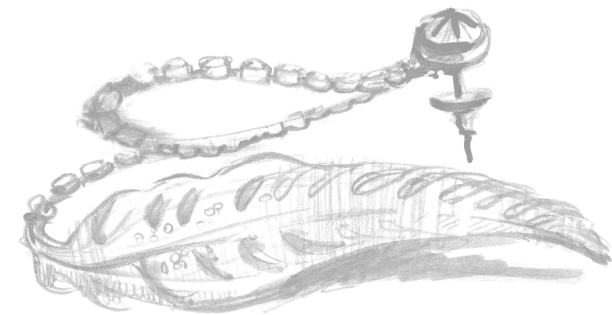


## NEW PLATING

# *Rose Gold Plating*

## PRETTY IN PINK (GOLD)

Our trendy, delicate 18K Rose Gold plating promises to be all the rage for Spring and Summer 2016. Seen on the runways of all the top fashion brands this season, this precious pink belle of the ball add a distinct element of femininity and elegance to every design!





**AVAILABLE IN CUP CHAINS, RONDELLES, BALLS, TUBES, FANCY RONDELLES,  
STONES IN SETTINGS (SEW-ON) AND STONES IN FANCY SETTINGS (SEW-ON)**

Available Platings

Plating	Type	Art.
/7R	rose gold	Cup Chains MAXIMA ss 6.5, 8.5, 12, 18
/0R	rose gold	Cup Chains MAXIMA ss 16, 29 Cup Chain MC Baguette MAXIMA 7×3 mm Rondelles and Balls Crystal Tubes Fancy Rondelles Stones in Settings, Sew-on Stones in Fancy Settings, Sew-on



**NOTE:**

The new Rose Gold plating meets all RoHS and Reach standards.

Not available for: Strass Rings, MC Chaton Rose VIVA 12<sup>®</sup> and Flower Cup.

# Environment

► Preciosa is a European company that believes in preserving the environment. We strive to ensure safety for those who use our products. We enforce environmentally safe working conditions and utilize ecologically responsible technologies. The highest standards of quality and ecological certification are fully met by our lead-free MAXIMA by Preciosa® product line and MC Chaton Rose VIVA 12® which both contain less than 0.009 % lead. Our production is regularly tested by accredited laboratories in order to ensure their compliance with all major crystal standards and legislation below:

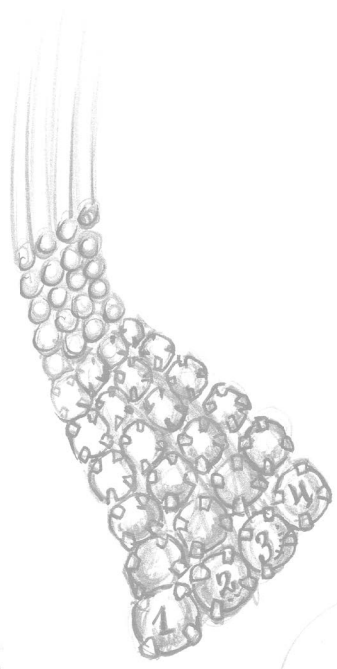
- ✓ **ASTM F2923-11\***  
Standard Specification for Consumer Product Safety for Children’s Jewellery
- ✓ **ASTM F963-11\***  
Standard Consumer Safety Specification for Toy Safety
- ✓ **CPSC 16 CFR 1303**  
Lead in a Surface Coating
- ✓ **CPSIA\***  
Consumer Product Safety Improvement Act
- ✓ **Safety of Toys**  
Heavy metal migration limits according to Directive 2009/48/EC
- ✓ **OEKO-TEX Standard 100**  
Product Class II
- ✓ **REACH**  
Registration, Evaluation, Authorisation and Restriction of Chemical Substances
- ✓ **RoHS\*\***  
Restriction on Use of Hazardous Substances

\* Requirements of this standard are fully met by Lead-Free Brilliance products.

\*\* Except Citrine, Coral, Garnet, Hyacinth, Light Siam, Olivine, Siam, Sun.



PRECIOSA products that carry our new Lead-Free Brilliance symbol contain less than 0.009 % lead (< 90 ppm) and are made according to the highest environmental and sustainable manufacturing practices. These premium products meet the most stringent industry standards and international certifications.



*Handing*







**Member of PRECIOSA Group**

PRECIOSA® is a registered trademark.

**Preciosa Service Centre**

Opletalova 3197  
466 67 Jablonec nad Nisou  
Czech Republic

[www.preciosa.com](http://www.preciosa.com)

© 2015 Preciosa, a. s.  
June 2015  
SAP 4196603